



GSW[®]

www.GSW-USA.com

East Coast - Georgia

2063 Mountain Industrial Blvd. Tucker, GA 30084

Tel : 1-800-970-7998, 1-678-209-0808

Fax: 1-678-209-0809

West Coast - California

4177 Rowland Ave. #B, El Monte, CA 91731

Tel : 1-800-897-5999, 1-626-291-5599

Fax: 1-866-499-3088, 1-626-286-0166

Chinese Wok Range

ALWAYS THE BEST FOR LESS!



CALIFORNIA P65 WARNING!



This product contains chemicals known to the state of California to cause cancer and birth defects or other reproductive harm. For more information please visit:

www.P65Warnings.ca.gov

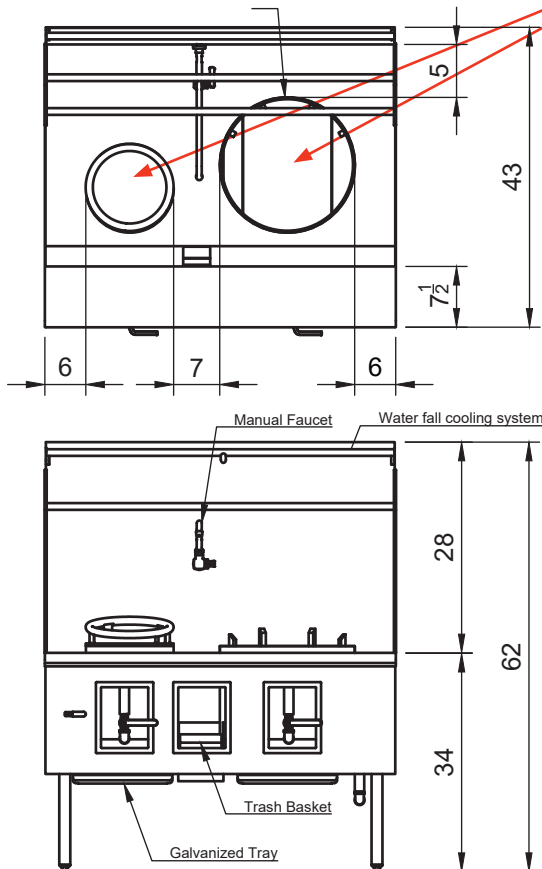


Manufacturer & Distributor of Quality Food Service and Custom Made Equipment

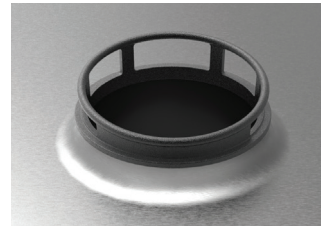
CUSTOM MAKE CHINESE WOK RANGE

GSW provide custom make chinese wok range from 1 to 9 ranges upon customer's request. Our standard chinese wok range is 43" depth, 34" working height & 62" overall height. 6" space from range edge to the side and minimum 6" space between ranges, 7" space between ranges for trash basket between ranges.

Minimum 5" space from edge to backsplash
Add fire guard help protect backsplash

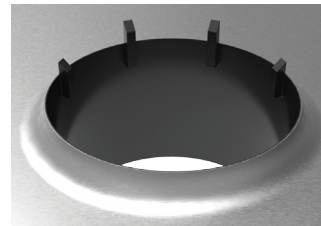


Pick the size you need and choose between fry/soup cooking or both!



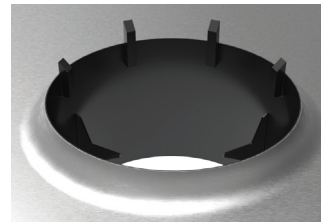
STANDARD FRY RANGE:

Ø13" Cast Iron rim (most common in Asian restaurant)



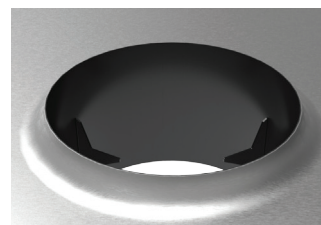
FRY RANGE:

Ø16", Ø18", Ø20" & Ø22" chamber available (Ø16" 2 legs, Ø18" and up with 4 legs)



FRY & SOUP RANGE:

Ø16", Ø18", Ø20" & Ø22" chamber available, comes with 3 triangle brackets to hold soup pot (Ø16" 2 legs, Ø18" and up with 4 legs)



SOUP RANGE:

Ø16", Ø18", Ø20" & Ø22" chamber available, comes with 3 triangle brackets to hold pot

- 14 gauge SUS304 heavy duty work surface
- Backsplash waterfall cooling system
- Easy access knee level gas valve handle
- 13" swing spout manual faucet

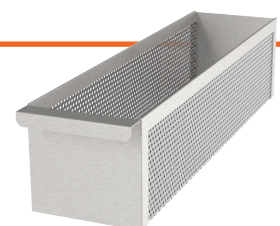
Included Items:



Manual Faucet
(AA-513GS)

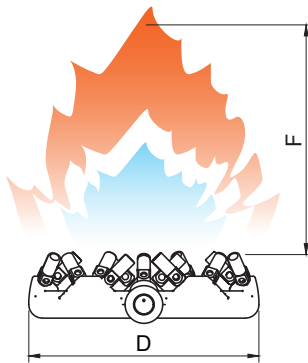


Galvanized Steel Drip Pan/1 pan each range



Trash Basket
(Removable)

BURNER TYPES



10 Tips

23 Tips

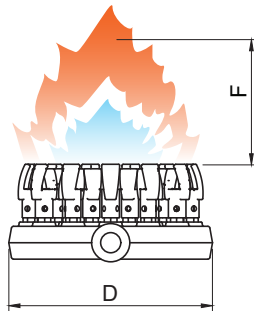
32 Tips



Heavy-duty construction high heat output cast iron jet nozzle burner. Ideal for a wide variety of cooking styles and dishes. This jet burner offers just the right balance between quality and functionality. It offers maximum heat output to effortlessly heat even your largest wok pans and grills.

Cast Iron Jet Nozzles Burner

Item No.							
Natural Gas	Liquid Propane	D (Øin)	F (in)	Gas Inlet (Øin)	Tips Qty.	BTU/hr	For Chamber (Øin)
WR-JBR10NG	WR-JBR10LP	Ø5-1/2	10	Ø3/8	10	80,000	Ø13
WR-JBR23NG	WR-JBR23LP	Ø8-1/2	14	Ø1/2	23	125,000	Ø13, 16, 18
WR-JBR32NG	WR-JBR32LP	Ø10-1/2	12	Ø3/4	32	160,000	Ø16, 18, 20, 22



18 Tips

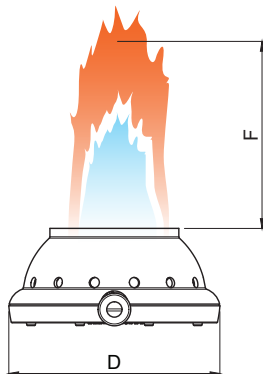


28 Tips

Heavy-duty construction high heat output cast iron duck tip nozzle burner. Ideal for a wide variety of cooking styles and dishes. This jet burner offers just the right balance between quality and functionality. It offers maximum heat output to effortlessly heat even your largest wok pans and grills.

Cast Iron Duck Tip Nozzle Burner

Item No.							
Natural Gas	Liquid Propane	D (Øin)	F (in)	Gas Inlet (Øin)	Tips Qty.	BTU/hr	For Chamber (Øin)
WR-JBD18NG	WR-JBD18LP	Ø7-1/2	11	Ø1/2	18	125,000	Ø13, 16, 18, 20
WR-JBD28NG	WR-JBD28LP	Ø11	9	Ø1/2	28	180,000	Ø16, 18, 20, 22



15 Tips



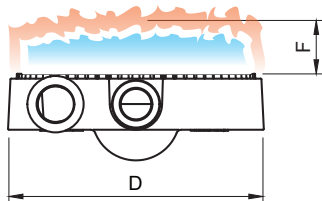
20 Tips

Heavy-duty construction high heat output cast iron jet nozzle burner with removable cap. This center focused speed burner design offers maximum heat output to effortlessly heat up your wok pans and grills in a very short time.

Cast Iron Speed Jet Burner

Item No.							
Natural Gas	Liquid Propane	D (Øin)	F (in)	Gas Inlet (Øin)	Tips Qty.	BTU/hr	For Chamber (Øin)
WR-JBC9NG	WR-JBC9LP	Ø9	20	Ø1/2	15	130,000	Ø13, 16, 18
WR-JBC9N-20NG	WR-JBC9-20LP	Ø9	20	Ø1/2	20	130,000	Ø13, 16, 18
WR-JBC10NG	WR-JBC10LP	Ø10	20	Ø3/4	20	160,000	Ø16, 18, 20

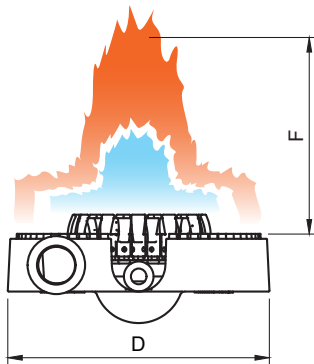
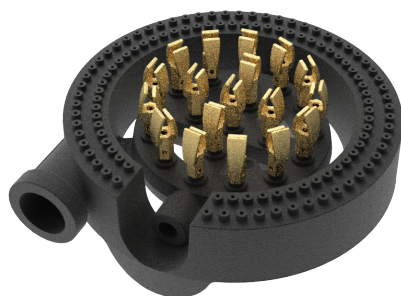
BURNER TYPES



Heavy-duty construction low pressure cast iron ring burner. This burner offers just the right balance between quality and functionality. It heat up evenly-directed manner to your soup pot. Ideal for soup boiling.

Cast Iron Ring Burner

Item No.		D (Øin)	F (in)	Gas Inlet (Øin)	BTU/hr	For Chamber (Øin)
Natural Gas	Liquid Propane					
WR-RB2NG	WR-RB2LP	Ø7-1/2	4	Ø1-1/4	30,000	Ø13, 16, 18
WR-RB3NG	WR-RB3LP	Ø12-1/2	4	Ø1-1/4(inside) \$ Ø1-1/2(outside)	90,000	Ø18, 20, 22



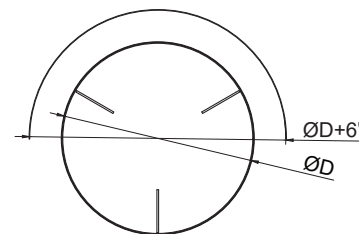
Heavy-duty construction low pressure cast iron ring burner. This burner offers just the right balance between quality and functionality. It heat in evenly-directed manner to heat even your soup pot. Ideal for soup boiling.

Cast Iron Ring Burner with 18 Duck Tips Jet Burner

Item No.		D (Øin)	F (in)	Gas Inlet (Øin)	Tips Qty.	BTU/hr	For Chamber (Øin)
Natural Gas	Liquid Propane						
WR-3R18DNG	WR-3R18DLP	Ø12-1/2	11	Ø1/2 & Ø1-1/2	18	180,000	Ø18, 20, 22



All fire guard 12" height



Adding the fire guard helps prevent backsplash being over heated from constantly cooking for long period of time. It helps stop backsplash being deformed and keeps it last longer.

Fire Guard Wok Range Spash

This is an optional accessory.

GSW WOK RANGE ACCESSORIES

Basket Holder



Item No.	Description
B-BH9	Ø9"
B-BH11	Ø11"

S/S Vegetable Basket



Item No.	Description
STR-P09	Ø9" (Wire)
STR-P11	Ø11 (Perforated)
STR-A11	Ø11 (Perforated)

Cast Iron Rim



Item No.	Dimension (in)
WR-CIR133	Ø13.3 Opening

Stainless Steel Sauce Cart

C-SCE

Adjustable height range 34"~36"
12-1/2" clearance between shelves
Top pan removable

Gas Valve Handle



Item No.	Description
WR-GVH	For WR-GV

Wok Range Rectangle Frame



Item No.	Description
GRE-WSF8	8-1/2 x 10-1/2 (O.D) 6-1/8 x 8-1/2 (O.D)
GRE-WSF13	13-5/8 x 10-1/2 (I.D) 11-1/2 x 8-1/2 (I.D)

Manual Wok Range Faucet



Item No.	Description
AA-513G	14" Spout Heavy Duty Brass
AA-513GS	14" Spout Full Stainless Steel

Auto Wok Range Faucet



Item No.	Description
AA-510G	14" Spout 3/8" Inlet
AA-511G	17" Spout 3/8" Inlet
AA-517G	14" Spout 1/2" Inlet



Stainless Steel Sauce Pan

Item No.	Description
P-SAPA6	20" x 12" x 3-3/4"



Wok Range Reducer

Item No.	Description
WR-RE1813	From 18" to 13"
WR-RE2013	From 20" to 13"
WR-RE2213	From 22" to 13"

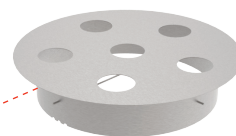


S/S Wok Range Soup Pot

Item No.	Description	Gallon
PT-2317	For 18" Range	7.4
PT-2319	For 20" Range	9.8



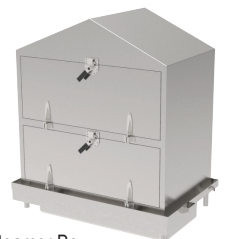
Custom Make Accessory Available




Soup Pot Riser with Steamer & Noodle Cooker





Double Rice Roll Steamer

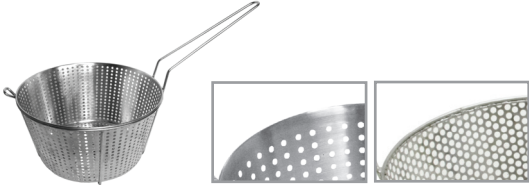



Steamer Box


	Stainless Steel Laddles				
	Item No.	Ladles Dia. (in)	Capacity (oz)	G. W. (lb)	Qty. /case
	LD-S	Ø4-1/2	7.2	31	50
	LD-M	Ø4-7/8	9.2	41	50
	LD-L	Ø5-1/8	10.4	44	50
	LD-XL	Ø5-3/4	15.2	49	50
LD-32	Ø7	30	90	50	

	Stainless Steel Turners			
	Item No.	Open Width (in)	G. W. (lb)	Qty. /case
	TN-S	4-3/8	26	50
	TN-M	4-3/4	31	50
	TN-L	5	38	50
TN-XL	5-1/4	44	50	

	Stainless Steel Skimmers				
	Item No.	Ladles Dia. (in)	Capacity (oz)	G. W. (lb)	Qty. /case
	SK-9	Ø9	6-1/2	30	25
	SK-10	Ø10	6-1/2	33	25
SK-12	Ø12	7-1/2	38	25	

	Stainless Steel Vegetable Baskets				
	Item No.	Basket Dia. (in)	Material Type	G. W. (lb)	Qty. /case
	STR-P09	Ø9	Perforated	30	25
	STR-P11	Ø11	Perforated	33	25
STR-A11	Ø11	Wire	38	25	

	18 Gauge Single Handle Stainless Steel Wok				
	Item No.	Wok Dia. (in)	Wok Height (in)	G. W. (lb)	Qty. /case
	WK-14S	Ø14	4	37	12
WK-16S	Ø16	4	39	12	

	5 woks /case			
	18 Gauge Double Handle Iron Wok			
Item No.	Wok Dia. (in)	Wok Height (in)	G. W. (lb)	
WK-16	16	5	19	
WK-17	17	5	23	
WK-18	18	5-1/2	26	
WK-19	19	6	29	
WK-20	20	6	31	
WK-22	22	7	35	
WK-24	24	7	37	
WK-26	26	9	42	
WK-28	28	9	47	
WK-30	30	9-1/2	70	

	Optional: Custom Drain Valve				
					
1 pot /case					
POT-2024P POT-2024B					
Stainless Steel Pots & Perforated Pot Basket					
Item No.	Dia. x H (in)	Gauge	Qt.	G. W. (lb)	
POT-1616P	15-3/4 x 15-3/4	19	53	18	
POT-2024P	19-3/4 x 23-3/4	18	120	37	
POT-2424P	23-5/8 x 23-3/4	18	170	51	
POT-1616B	13 x 13	19	-	10	
POT-2024B	17 x 21	18	-	22	
POT-2424B	21 x 21	19	-	28	

Gas Pressure Regulator							Pilot Tubing w/ Head, Nut & Ferrule	
	Item No.	NPT	psig (mbar)	po-wc	Gas Type	lb/ ea.	Item No.	Description
	WR-52-1011	3/4"	1/2 (35)	po 3"-6"	NG	0.54	WR-PTC22	Ø3/16" x 22"
	WR-52-1012	3/4"	1/2 (35)	po 5"-12"	LP	0.54	WR-PTC27	Ø3/16" x 27"
	WR-52-1032	1"	1 (70)	po 3"-6"	NG	3.8	WR-PTC34	Ø3/16" x 34"
	WR-52-1033	1"	1 (70)	po 5"-12"	LP	3.8		
	WR-52-1034	1-1/4"	1 (70)	po 3"-6"	NG	3.8		
	WR-52-1035	1-1/4"	1 (70)	po 5"-12"	LP	3.8		
	WR-52-1044	1-1/2"	1 (70)	po 3"-6"	NG	5		
WR-52-1045	1-1/2"	1 (70)	po 5"-12"	LP	5			
								2 lb. 20/ case

Adjustable Pilot Elbow Valve		Adjustable Pilot Dual Valve		Adapter Straight Fitting	
Item No.	Description	Item No.	Description	Item No.	Description
WR-PVE	1/8" NPT x 3/16" O.D Tube	WR-PVD	1/8" NPT x 3/16" O.D Tube	WR-FS	3/16" NPT x 3/8" O.D Tube
	0.05 lb/ pc		0.11 lb/ pc		0.05 lb/ pc

Orifice Holder Elbow Fitting		Orifice Holder Straight Fitting		Orifice Holder "T" Fitting	
Item No.	Description	Item No.	Description	Item No.	Description
WR-FOE	3/8" NPT x 3/8" O.D Tube	WR-FOS	3/8" NPT x 3/8" O.D Tube	WR-FT	3/16" NPT x 3/16" O.D Tube
	0.17 lb/ pc		0.15 lb/ pc		0.09 lb/ pc

Wok Range Gas Valve		On/Off Gas Valve		Adjustable Pilot Valve	
Item No.	Description	Item No.	Description	Item No.	Description
WR-GV	1/2" NPT x 1/2" NPT	WR-HLV	#57 Orifice	WR-PVS	1/8" NPT x 3/16" O.D Tube
	0.12 lb/ pc		2 lb 20 /case		2 lb 20 /case

Anti-Clogging Jet Tip		Ø12mm Jet Burner Tip		Ø15mm Jet Burner Tip	
Item No.	For Burner Model	Item No.	For Burner Model	Item No.	For Burner Model
WR-DTNG	WR-JBD18	WR-JTNG	WR-JBC9, WR-JBR23, WR-JBR32	WR-JTCNG	WR-JBC10
WR-DTLP	WR-JBD18	WR-JTLP	WR-JBC9, WR-JBR23, WR-JBR32	WR-JTCLP	WR-JBC10
	0.12 lb/ pc		0.1 lb/ pc		0.06 lb/ pc





GSW[®]

www.GSW-USA.com

East Coast - Georgia

2063 Mountain Industrial Blvd. Tucker, GA 30084

Tel : 1-800-970-7998, 1-678-209-0808

Fax: 1-678-209-0809

West Coast - California

4177 Rowland Ave. #B, El Monte, CA 91731

Tel : 1-800-897-5999, 1-626-291-5599

Fax: 1-866-499-3088, 1-626-286-0166

ALWAYS THE BEST FOR LESS!



Manufacturer & Distributor of Quality Food Service and Custom Made Equipment